



# On the Path



The Newsletter of the Southern Maryland Emmaus Community

October, 2008 Walk In the Light Volume 8 Issue 6

## Men's Fall Weekend Update

*Everything in God's Time*

Many of you know that we sent out a number of alerts in September because we were in danger of not receiving enough pilgrim applications for the Men's Fall weekend. Southern Maryland Emmaus Board of Directors' operating policies require a minimum of 12 pilgrim applications to be received 8 weeks prior to a planned weekend in order to hold a Walk to Emmaus. Unfortunately, we did not receive 12 applications for the Men's Walk, so Men's Walk #29 could not take place.

Please pray as we now prepare for Men's Walk #31 in the spring as the lay director and team members are selected, and pilgrims are called. Seek the Lord's guidance as you consider sponsoring a gentleman to attend an Emmaus weekend. While 12 pilgrims are the minimum required to hold a weekend, we would love to have full capacity of 24 pilgrims for Men's Walk #31 in the spring of 2009.

- Jan Drass

## Support the Women's Walk

Don't forget to plan on attending the community weekend activities during the women's walk. Here are some ways you can help:

- Attend Candlelight on Saturday 11/8 at 8:00 p.m.
- Attend Closing on Sunday 11/9 at 4:00 p.m.
- Contribute Agape
- Sign up for Prayer Vigil (see page 2)
- Men - volunteer to entertain on Saturday 11/8 (contact [dbrennan6@verizon.net](mailto:dbrennan6@verizon.net))

## Local Gatherings

### Southern Gathering:

Lexington Park UMC  
2nd Saturday of each month  
5:00 p.m. Potluck, 6:00 p.m. Worship

### Central Gathering:

Calvary UMC  
3rd Saturday of each month  
6:00 p.m. Fellowship (bring snack)  
7:00 p.m. Worship

### Northern Gathering:

1st Laurel UMC  
4th Saturday of each month  
5:00 p.m. Potluck 6:00 p.m. Worship

*In addition to the monthly gatherings, plan to join as a community at Candlelight and Closing of each Walk. In a month when a 4th Day Seminar is scheduled (May & November) we will have one Gathering only at Calvary UMC immediately following the Seminar.*

**See page 2 for specific dates and times of all gatherings.**





## Fall Walks - 2008 - West River

Men's Walk # 29 - Cancelled

Women's Walk # 30 - November 6 - 9

Make plans to attend the community events for each walk:

Thursday - Sponsor's Hour - 7:00 p.m.

Saturday - Candlelight - 8:00p.m.

Sunday - Closing - 4:00 p.m.

This Week: 10/6/2008

Emmaus Community Stats

204 Weekends in

35 States and

3 Countries

133 Women's Weekends and

71 Men's Weekends



Sign up to pray for  
our walks (and others)  
online at:  
[www.3dayol.org](http://www.3dayol.org)

Pilgrim and Team Applications and this newsletter may be downloaded from the  
web at [www.somdemmaus.org](http://www.somdemmaus.org)

CLICK on "Document, Lists and Newsletters"

### Recurring Events of the Southern Maryland Emmaus Community

Central Gathering: 10/18, Calvary UMC, Waldorf 7:00 p.m. Fellowship 6:00 p.m.

Southern Local Gathering: Lexington Park UMC 10/11 Potluck at 5, gathering at 6:00.

Northern Local Gathering: FUMC Laurel, NO Gathering in October

Board of Directors Meeting: 10/18 3:00 p.m. at Calvary UMC



### 4th Day Seminars

The 4th Day Seminars are held in the spring and in the fall following the men's and women's walks. The next seminar date is November 15, 2008, 4:00 p.m. at Calvary United Methodist church in Waldorf. Attendance at a 4th Day Seminar is required in order to sponsor pilgrims, and highly recommended for those who wish to team.



## Southern Maryland Emmaus Community Reunion & Accountability Groups

The Reunion Group Coordinator, Mary Ulrey, would like to hear about any active Groups in Southern Maryland. If you are having difficulty finding a Reunion Group, contact Mary. Experience the 4th Day feeling with your fellow Emmaus travelers.

Bethel UMC, Upper Marlboro  
Co-ed - monthly first Wednesday - 6:00 p.m.

Calvary UMC, Waldorf  
Men Tuesday - 7:15 p.m.  
Women Saturday - 5:00 p.m. at Panera's

First UMC, Laurel  
Men Saturday - 7:00 a.m.  
Women Saturday - 8:30 a.m.

Good Shepherd UMC, Waldorf  
Men Wednesday 6:30 p.m.  
Women Monday 7:30 p.m.  
Women Tuesday 7:30 p.m. (not at church  
call 301-645-5370 for directions)  
Women Wednesday 6:30 p.m.  
Women Tuesday 8:45 a.m. (not at church)  
call 301-645-6414 for directions)

La Plata UMC, La Plata  
Women Tuesday 1:00 p.m.

Lexington Park UMC, Lexington Park  
Co-ed Tuesday 7:30 a.m. Bob Evans  
Co-ed Thursday - 11:30 a.m. (home setting)

Living Springs Christian Fellowship, Bowie  
Co-ed Tuesday - 6:00 p.m.

Naval Air Station, Patuxent River  
Men, Wednesdays, 11:30 a.m.

Olivet UMC, Lusby  
Monthly on first Monday  
6:30 p.m. at Tony De May's home.

Shiloh UMC, Bryans Road  
Co-ed - Tuesdays 6:00 p.m.

Waters Memorial UMC, St. Leonard  
Pastors, Tuesday -1:00 p.m.

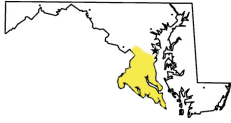
[www.somdemmaus.org](http://www.somdemmaus.org)

**Visit our new website.** No need to register at our new website as no personal information is maintained.



## On The Path

**Deadline for next issue is December 1, 2008.** The preferred method of submission is as an MSWord document file or a WordPerfect file sent via e-mail to the following address: [dbrennan6@verizon.net](mailto:dbrennan6@verizon.net) Very short articles or notes may be sent in the body of the e-mail message. Please send your comments and recommendations as well to the editor, Dan Brennan, at the e-mail address above.



## Southern Maryland Emmaus - Leadership & Service



### Board of Directors

*Personal information contained in this newsletter is intended for Emmaus activities only, and will not be released to other organizations for any reason.*

Elizabeth Harrell <i>Comm. Lay Director</i>	410-535-9608	lunchladyesh@hotmail.com
Vacant <i>Asst. Comm. LD</i>		
Jan Drass <i>Secretary</i>	301-834-6571	jdrass@maranatha.net
John Carns <i>Treasurer</i>	301-645-4534	Carns@comcast.net
Janet Goodwin <i>Past Comm. LD</i>	301-737-4070	janet.goodwin1@gmail.com
June Fauber <i>Asst. Events Coord.</i>	301-292-5483	jfauber610@hotmail.com
Vacant <i>Communications/Dir.</i>		
Donna Young <i>Registrar</i>	301-218-1257	dmy_psych@verizon.net
Ken Walker <i>Spiritual Director</i>	301-862-9280	pastorkenw@mindspring.com
Bob Bohn <i>Asst. Registrar</i>	301-904-8168	bkbohn@comcast.net
Mary Ulrey <i>Sponsorship</i>	410-326-6446	Mary.ulrey@gdit.com
Alan Hemming <i>Chrysalis</i>	301-994-9297	Alan.hemming@gmail.com
Lisa Hegedus <i>Team Selection Chair</i>	301-373-8974	hegedus2@md.metrocast.net
Harland Shoemaker <i>Asst. Team Selection</i>	301-645-4856	unclegg@verizon.net
Chris Owens <i>Asst. Spiritual Director</i>	301-725-6722	pastorchris@fumcl.org
Rich Weaver <i>Music Director</i>	301-843-2194	rhythmuitar1@hotmail.com
Dale Merkle <i>Agape Coordinator</i>	301-645-6091	Rdcemerk01@aol.com
Chester Willett <i>Asst. Agape Coord.</i>	301-934-3667	cwillett@khov.com

### On The Path

Is the newsletter of the Southern Maryland Emmaus Community. Published bi-monthly by e-mail, distributed by the Point of Contact for each participating church, and available on the Southern Maryland Emmaus website.

Southern Maryland Emmaus is affiliated with the International Emmaus Movement of The Upper Room, Nashville, Tn. Emmaus is a program offering of Upper Room Ministries of The United Methodist Church. Our purpose is to inspire, challenge, and equip church members for Christian Action.

Please contact the POC for your church as listed in this newsletter if you are not receiving the newsletter. If your church does not currently have a POC, please prayerfully consider volunteering for that role.



## Southern Maryland Emmaus - Leadership & Service

*Most Southern Maryland Committees are chaired by members of the Board of Directors, but service on those committees is open to all community mem-*

AGAPE Support	Dale Merkle	Newsletter	Dan Brennan
Child Care	Janet Goodwin	Communications	Vacant
Community Historian	Jan Drass	Prayer Vigil Coordinator	Sara Martin
Event Coordinator	Janet Goodwin	Registrar	Donna Young
Comm. Spiritual Director	Ken Walker	Reunion Group	Mary Ulrey
Entertainment	Dan Brennan	Team Selection Coordinator	Lisa Hegedus
Facility Representative	Vacant	Fourth Day Seminar	Mary Ulrey
Sponsorship	Mary Ulrey	Pilgrim Selection	Donna Young/Bob Bohn
Supply	Diane Walker	Music Director	Rich Weaver
Comm. Lay Director	Elizabeth Harrell		

*\*Communications includes e-mail, P/POC, Web, Directory and Newsletter sub committees*

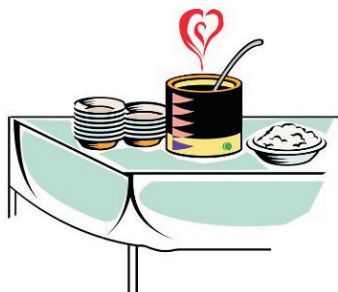
### Meal Assistance Needed

Women's Team of Walk #30 will be holding their weekend team retreat on October 24-26, 2008 at the Callaway campus, in St Mary's County. They are in need of having meals provided during the retreat weekend. for Saturday, October 25th, Breakfast and Dinner (lunch has already been taken care of).

Sunday, October 26th - breakfast only.

If you would be able to assist with providing a meal, please contact Lisa Hegedus by telephone at 301-373-8974. You can also e-mail Lisa at the following address: [Hegedus2@md.metrocast.net](mailto:Hegedus2@md.metrocast.net).

See Page 7 for directions to the Callaway Campus.



### Walk Costs Remain Unchanged

Greetings from your Community Treasurer. This is a short note to let you know that we project no change in the cost of our Walks through 2009; to remind you of the costs for Pilgrims and Team Members and to discuss scholarship opportunities.

Pilgrim Costs: \$200

\$35, due from Pilgrim with their application.

\$165, due from sponsor at sponsor's hour.

Team Costs:

\$200, due by the final team meeting.

#### **Scholarship opportunities:**

We reserve 10% of all offerings (Gatherings and Candlelights) and accept other contributions to a scholarship fund that is used to assist both Team Members and Sponsors needing financial assistance with Walk costs. Team members in need of scholarships should inform their Weekend Lay Director or Weekend Spiritual Director. Sponsors in need of financial assistance should inform the Community Lay Director or the Treasurer. Sponsors are also encouraged to explore other sources of scholarship funds for their pilgrims such as Reunion Groups and local churches.





## Southern Maryland Emmaus - Prayer Points of Contact

*This is the person to contact for newsletter distribution*

***If your church is not listed, please volunteer to be the Prayer POC  
send your name, e-mail address and telephone to dbrennan6@verizon.net***

Bowie UMC	Helen McProuty	hmcprouty@verizon.net	301-262-0762
Calvary UMC	Dawn Townsend	dawn5babe@gmail.com	301-843-3315
Cedar Grove UMC	Jacque Benjamin	jacque.benjamin@gmail.com	410-257-2595
Emmanuel Baptist	Dick Fogg	upper12_4us@peoplepc.com	410-257-5015
Emmanuel UMC	Ed Plotts	ewpjr@comcast.net	410-535-2992
Dahlgren UMC	Robert Kertesz	cardinalpilot177@comcast.net	301-259-2933
Clinton UMC	June Fauber	jfauber610@hotmail.com	301-292-5483
Corkran Memorial UMC	Peggy Ireland	peggy@nam.org	
Faith Bible Church	Wendy Headrick	wbheadrick@usa.net	301-475-3278
Faith UMC (Rockville)	Cindy Matter	cindymatter03@aol.com	301-926-7830
First UMC (Laurel)	Dave Meixner	themeixners@comcast.net	301-498-1728
Glenn Dale UMC	Kay Smith	Zincdr@aol.com	301-262-0694
Good Shepherd UMC	Linda Flanagan	waldorfangel@gmail.com	301-645-1375
Bethel UMC	Jan Holmes	janmhol@verizon.net	410-798-8393
Indian Head UMC	Sarah Miller	sarahlundmiller@aol.com	301-743-2490
La Plata UMC	Bonnie Thompson	bonbri@comcast.net	301-934-4321
Leonardtown Baptist Church	Wendy Headrick	wbheadrick@usa.net	301-475-3278
Living Springs	Don Richardson	dcdaddy@peoplepc.com	
Lexington Park UMC	Kathie Wright	kaatrobjas@verizon.net	301-862-4048
Marbury Baptist Church	Denise McConnell	dmccconnell@earthserve.com	301-743-6995
Mt. Zion UMC	John Carns	john.carns@mantech.com	301-645-4534
New Life Wesleyan Church	Dona Batten	gsuslivs@comcast.net	301-752-3795
Olivet UMC	Bob Bohn	bkbohn@comcast.net	410-326-0645
Providence/Ft. Washington UMC	Rich Weaver	rhythmuitar1@hotmail.com	301-843-2194
St. Paul UMC (Lusby)	Ruth Dixon	mese22@olg.com	410-326-3821
St. Paul's UMC (Leonardtown)	Wendy Headrick	wbheadrick@usa.net	301-475-3278
Shiloh UMC	Peggy Ireland	peggy@nam.org	
Smithville UMC	Kathy Massaro	snjwalk93@comcast.net	410-257-1953
South Potomac Church	P.J. Pitonyak	LadyPJay@aol.com	301-579-6811
Trinity UMC	Laura Yax	lkyax@comcast.net	410-535-4665
Trinity Baptist Waldorf)	Karen Smith	musicladykaren@yahoo.com	301-274-2504
Waters Memorial UMC	Nancy Massie	watersumc@hotmail.com	

**New Southern Maryland Website Now Available**

Visit us at [www.somdemmaus.org](http://www.somdemmaus.org)

Be sure to check the site often to keep up on the latest Emmaus news..

First Saints Community Church  
Callaway Campus  
21549 Point Lookout Road  
Callaway, Maryland 20620

Women's Team Weekend Retreat

From the Leonardtown direction, take Route 5 (Point Lookout Road) east toward Lexington Park. Go approximately 8 miles, past Chingville Road, till you see a brown road sign for St. Mary's River State Park. The Callaway Campus driveway will be on your right. White posts with pointed finials mark the entrance to the driveway. Follow the driveway straight back to a white house.

From the Calvert County direction, take Route 2/Route 4 south toward St. Mary's County, crossing the Solomon's Island Bridge. At the intersection of Route 235 and Route 4, continue on Route 4 (St. Andrew's Church Road) toward Leonardtown and Route 5. Turn left onto Route 5 at the light. Continue east toward Lexington Park approximately 6 miles, past Chingville Road, till you see a brown road sign for St. Mary's River State Park. The Callaway Campus driveway will be on your right. White posts with pointed finials mark the entrance to the driveway. Follow the driveway straight back to a white house.

From the Lexington Park direction, take Route 246 (Great Mills Road) southwest to Route 5. Turn right toward Leonardtown. Go approximately 2.5 miles until you see a brown road sign for St. Mary's River State Park and Camp Cosoma Road on your right. The Callaway Campus driveway will be on your left opposite Camp Cosoma Road (just past a concrete birdbath business on your left). White posts with pointed finials mark the entrance to the driveway. Follow the driveway straight back to a white house.

## Southern Maryland Emmaus Board of Directors Needs YOU!

The Board currently has two vacancies to fill due to the recent announcement that two persons will be unable to fulfill their term on the Board. We are praying that God will speak clearly to two persons from our community to step forward and join us on the Board for the remainder of their terms.

What do Board members do? Each person is expected to attend monthly meetings which are held on the third Saturday of the month. In addition, each Board member takes responsibility for one area of service/leadership. For example, Board members serve as the chairperson for team and pilgrim selection committees, agape, music, community events, communication, as well as secretary and treasurer, to name a few of the positions. To see a list of current members and their assigned service areas, please see page 4.

You do not need prior experience serving as a team member on an Emmaus weekend to serve on the Board of Directors. We like to have all areas of the Southern Maryland community and local churches represented. We invite anyone who is interested to contact our Community Lay Director Elizabeth Harrell at [lunchladyesh@hotmail.com](mailto:lunchladyesh@hotmail.com) or 410-535-9608.



The 4th Day Seminar will be held Saturday, November 15, at Calvary UMC in Waldorf, MD beginning at 4:00 p.m. If you have sponsored a pilgrim, and they have not attended a 4th Day Seminar, invite them. It's your duty as a Sponsor to do so.

## Child Care News

*Janet Goodwin*

The So MD Emmaus Board is in the process of adopting a Safe Sanctuaries Policy to ensure the safety of both our children and the care givers at all Emmaus events, including local gatherings, candlelight, closing and 4<sup>th</sup> Day Seminar.

What is Safe Sanctuary? This is a policy developed by the United Methodist church to ensure the safety of both children and care givers.

What does this mean for So Md Emmaus?

1. That all child givers have a background check prior to serving in this capacity.

Hopefully, we will be able to engage people from churches that already have completed this requirement, so not to incur additional costs. BUT, if the need arises, So Md Emmaus will pay for the background check.

2. That 2 adults be in the child care room.

Child Care has and will continue to be a paid position at \$10 per hour.

Unfortunately, we have had very little success with identifying child care providers for the local gatherings. With that said – until people come forward to serve, there will be no childcare for any of the local gatherings. It is with a heavy heart that the board has come to this decision. Hopefully, people will come forward to serve in this role.

We are striving to have child care provided at the Fall Women's walk candlelight and closing events. Look for an Emmaus email from your PPOC, finalizing this prior to the



## Directions to West River United Methodist Center

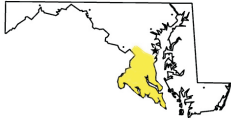
*Plan on attending the Candlelight on Saturday 11/8 at 8:00 p..m.  
|and the Closing on Sunday, 11/9 at 4:00 p.m. at West River*

From Baltimore and Annapolis: Take Route 3/I-97 south from Baltimore. I-97 will merge into Route 50 at Annapolis. After the merge, take the first exit on to Aris T. Allen Blvd. (Route 665) to Route 2. Go South on Route 2, and turn left on Route 214. At the second light, turn right on Route 468 (Muddy Creek Road). Follow Route 468 for four miles. Make a left on Chalk Point Road. The entrance to the camp is one mile down on the left.

From Washington: Follow Route 4 to Route 258. Proceed on Route 258 to Route 256. Turn left on Route 256 and proceed to Route 468. Turn left on Route 468. Turn right on Chalk Point Road. The entrance to the camp is one mile down on the left.

From Points South: Follow Route 2 North to Route 256. Proceed to Route 468. Turn left on Route 468. Turn right on Chalk Point Road. The entrance to the camp is one mile down on the left.





"Walk in the Light" - Southern Maryland Emmaus  
Visit us on the web at [www.somdemmaus.org](http://www.somdemmaus.org)

*"Were not our hearts burning within us while He was speaking to us on the road, while He was explaining the Scriptures to us?"*

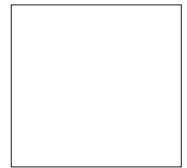
Luke 24:32

Information on the Southern Maryland Walk to Emmaus, as well as pilgrim and team applications may be found on our website:  
[www.somdemmaus.org](http://www.somdemmaus.org)

---

### *On the Path*

1005 Norfolk Dr.  
La Plata, Md. 20646



Time Sensitive Material